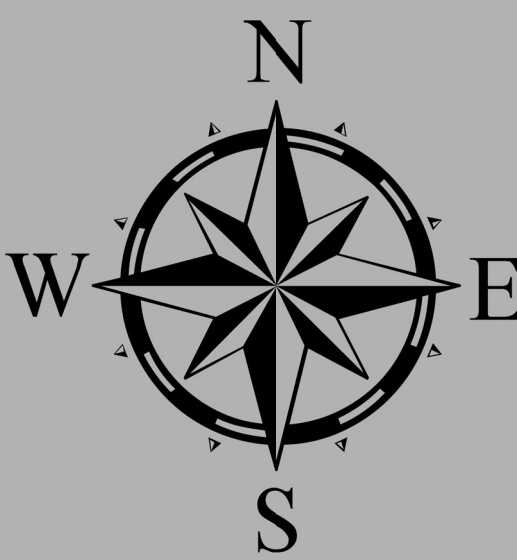




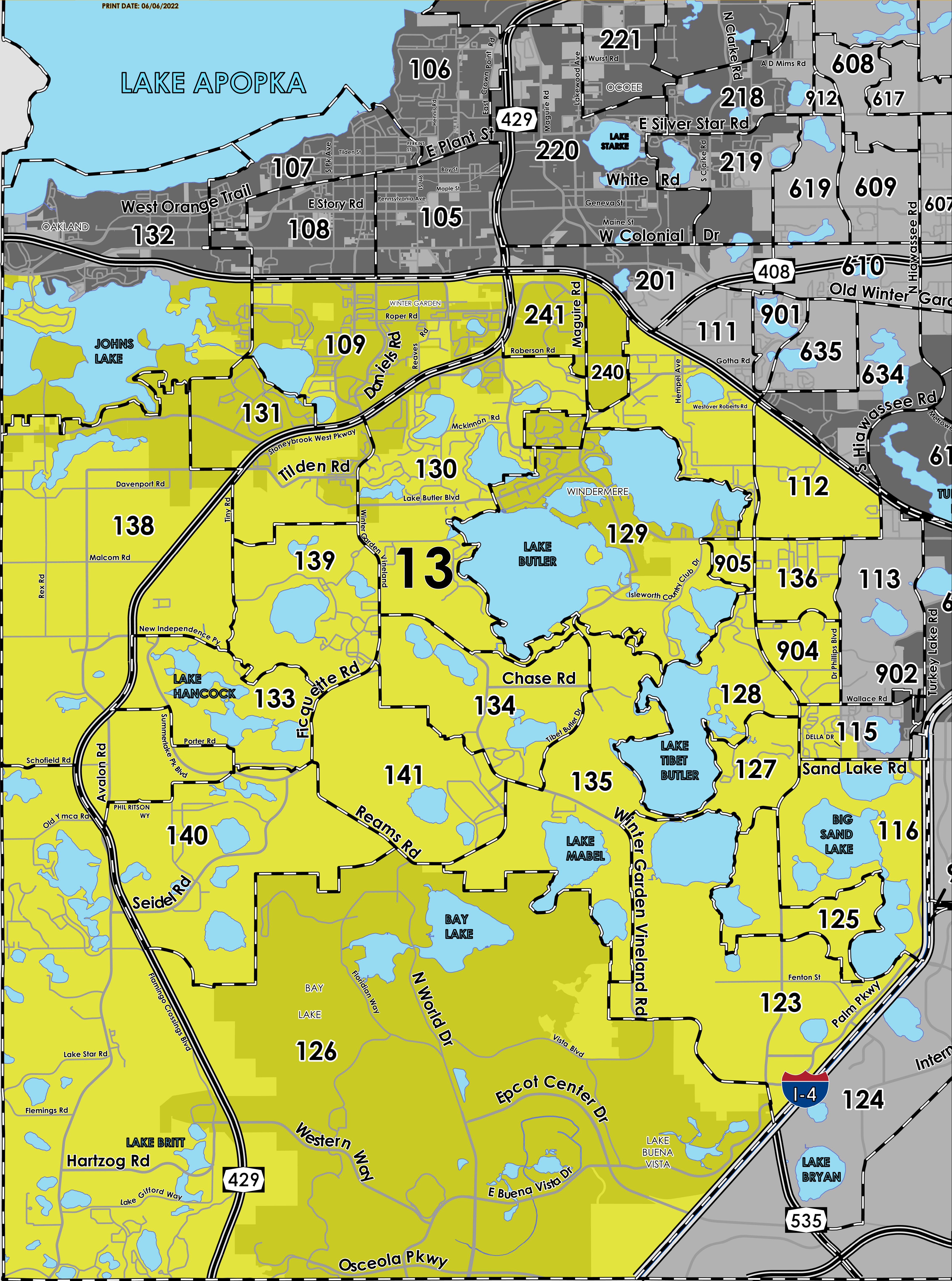
FLORIDA STATE SENATE 2022
DISTRICT 13 ORANGE COUNTY PRECINCTS

COUNTY PRECINCTS

MAP PRODUCED BY ORANGE COUNTY SUPERVISOR OF ELECTIONS, FLORIDA USA



PRINT DATE: 06/06/2022



State Senate (2022) district 13 falls within Southwest Orange County. The northern boundary follows along Johns Lake and the Florida Turnpike. The western boundary follows along Lake/Orange County border. The southern boundary follows along Osceola/Orange County border. The eastern boundary follows along Interstate 4 and extends to Dr. Phillips Boulevard and South Hiawasse Road. A complete list of Orange County's precincts within district 13 can be found at the end of this document.

For more detailed views of other county and municipal precincts, [visit the District and Precinct Maps page](#). For more information about precinct boundaries, contact the [Orange County Supervisor of Elections office](#).

This map was printed on June 29, 2022 by the Orange County Supervisor of Elections Mapping Department. Bill Cowles is the Supervisor of Elections at the time of production. More voter information can be found [on our website](#).

State Senate (2022) district 13 includes the following Orange County precincts:

- 109
- 112
- 115
- 116
- 123
- 125
- 126
- 127
- 128
- 129
- 130
- 131
- 133
- 134
- 135
- 140
- 141
- 240
- 241
- 904
- 905
- 906