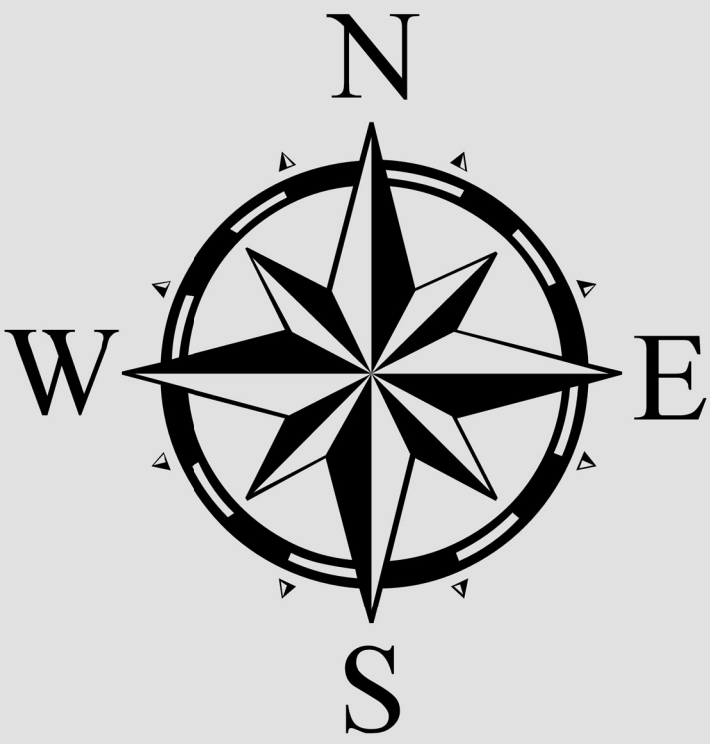




PRECINCT 434 & 910

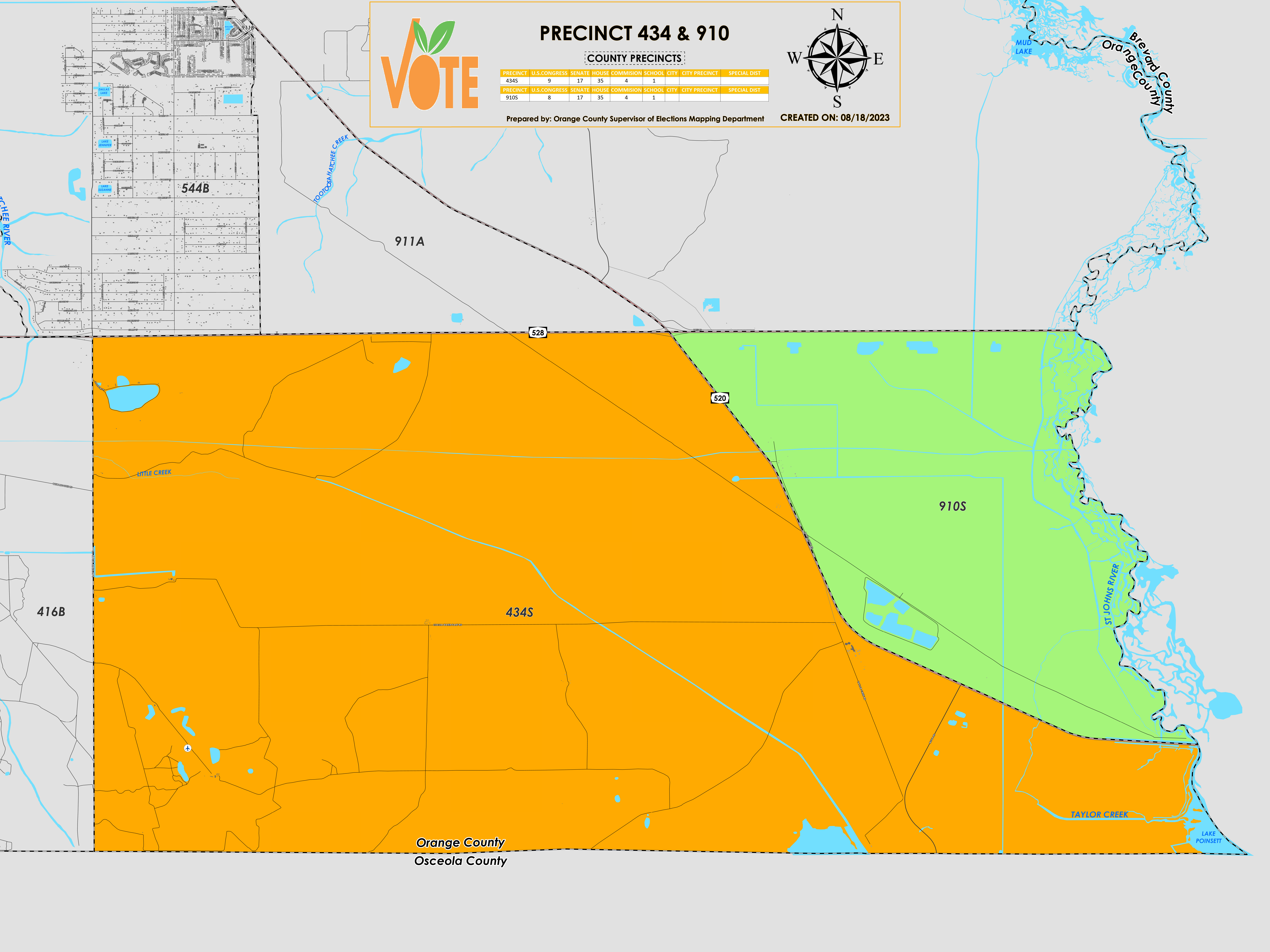
COUNTY PRECINCTS

PRECINCT	U.S. CONGRESS	SENATE	HOUSE	COMMISSION	SCHOOL	CITY	CITY PRECINCT	SPECIAL DIST
434S	9	17	35	4	1			
PRECINCT	U.S. CONGRESS	SENATE	HOUSE	COMMISSION	SCHOOL	CITY	CITY PRECINCT	SPECIAL DIST
910S	8	17	35	4	1			



Prepared by: Orange County Supervisor of Elections Mapping Department

CREATED ON: 08/18/2023



Precinct 434 (2024) northern boundary follows along State Road 528. The western boundary follows along South County Road 13. The southern boundary follows along the Osceola/Orange County border, and the eastern boundary follows along Taylor Creek Road and continues onto State Road 520.

Precinct 910 (2024) northern boundary follows along State Road 528. The western boundary follows along State Road 520 and continues onto Taylor Creek Road. The southern boundary follows along the Osceola/Orange County border, and the eastern boundary follows along the Saint Johns River or along the Brevard/Orange County border.

Precinct 434S is with district assignments of U.S. Congress 9, State Senate 17, State House 35, County Commission 4, and School Board 1.

Precinct 910S is with district assignments of U.S. Congress 8, State Senate 17, State House 35, County Commission 4, and School Board 1.

For more detailed views of other county and municipal precincts, [visit the District and Precinct Maps page](#). For more information about precinct boundaries, contact the [Orange County Supervisor of Elections office](#)

This map was produced by the Orange County Supervisor of Elections Mapping Department. Additional voter information can be found [on our website](#).